

# Alcuni Rivestimenti    Some Upholsteries

- Colori, tessuti e pelli fotografati sono indicativi
- Colours, fabrics and leathers photographed are indicative

## AVVERTENZE GENERALI

I colori chiari, non devono essere messi a contatto con tessuti e capi d'abbigliamento trattati con coloranti non fissati, o con scarse solidità di tintura, onde evitare macchie ed aloni di coloranti di cui non possiamo garantire la pulitura.

## GENERAL WARNINGS

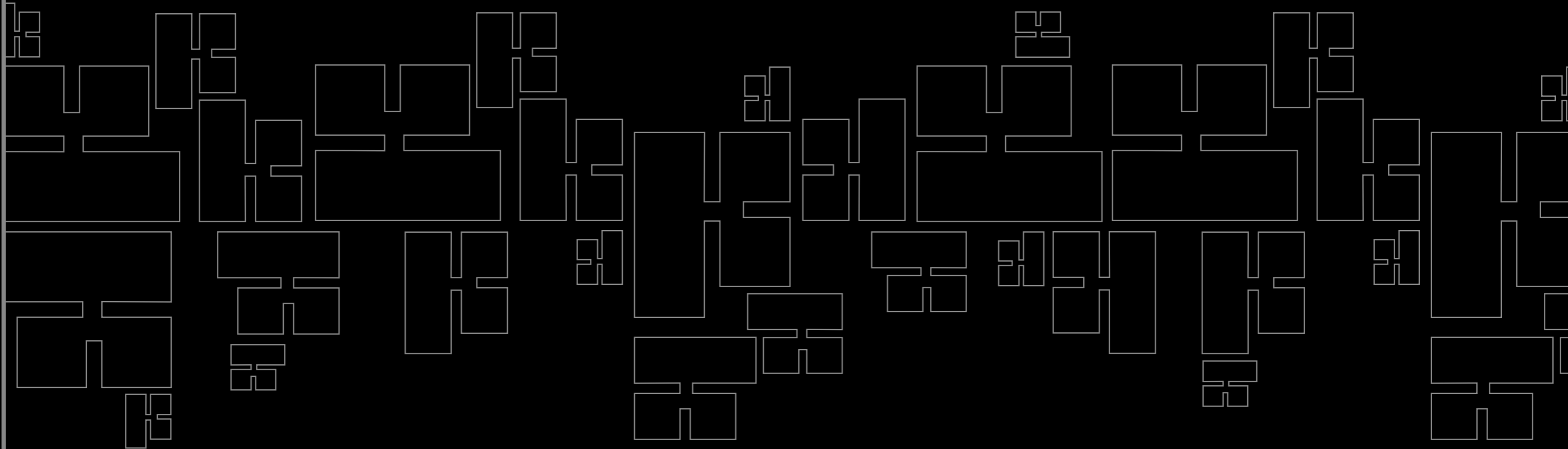
To avoid permanent stains, the lighter colours of the article should not be brought into contact with textiles and clothing unfixed dyes. We cannot guarantee the ability to remove unknown dyes from light coloured product.

I tessuti spalmati (ecopelli) possono essere sanificati superficialmente come da decreto del Ministero della Salute con soluzioni di acqua e alcool etilico al 70% e prodotti disinfettanti commerciali pronti all'uso. Si consiglia di provare il prodotto su un angolo nascosto della superficie da pulire.

Evidenziamo speciali trattamenti, antimicrobici, antibatterici e antimicotici, che caratterizzano da sempre alcuni nostri rivestimenti, per creare un'efficace barriera difensiva contro batteri, acari e funghi, uniti ad eccezionali caratteristiche di praticità e durata nel tempo.

The coated fabrics (eco-leathers) can be superficially sanitized as per the Decree of the Italian Ministry of Health with solutions of water and 70% ethyl alcohol and commercial disinfectant products ready for use. We suggest to test the product on a small hidden corner of the surface you need to clean.

We focus your attention on special antimicrobial, antibacterial and antifungal treatments, which have always distinguished some of our coatings to create a valid defensive barrier against bacteria, mites and fungi, combined with exceptional features of practicality and durability.



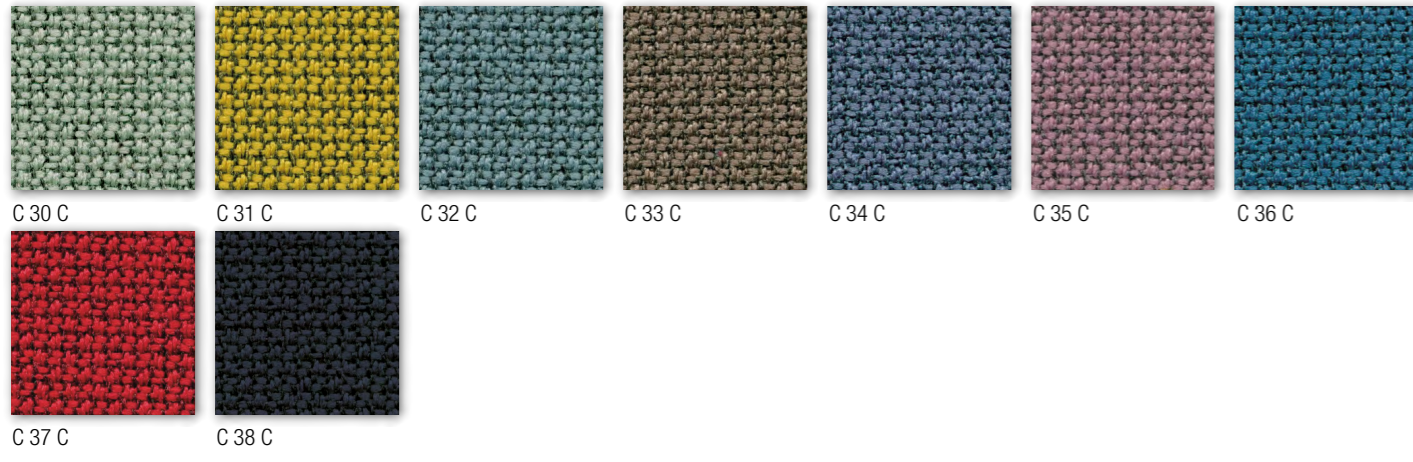
**A** Categoria Category  
 Resistenza alla fiamma - Fire resistance  
 Certificato Classe 1 UNI 9175 CL. 1 IM  
 87,5% P.V.C. plastificato - 12,5% cotone  
 (Martindale 100.000)



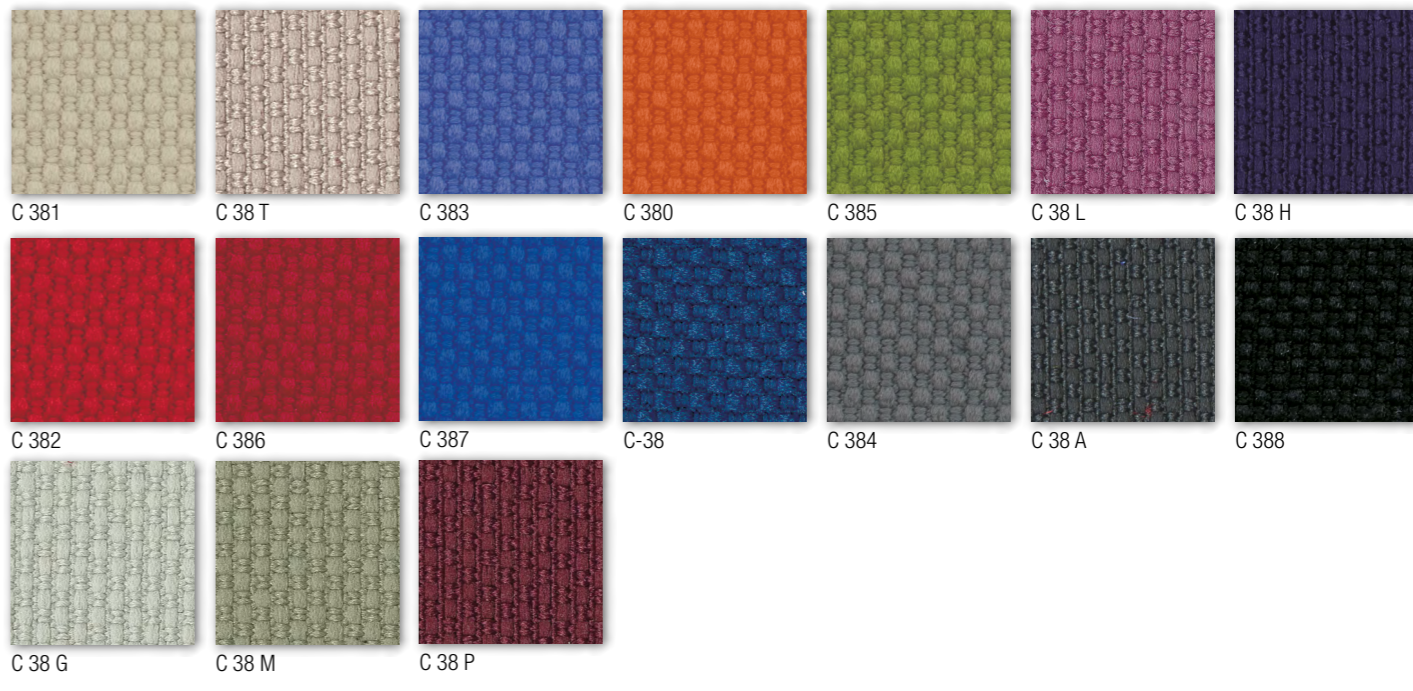
**C** Categoria Category  
 SKILL/SECRET  
 Resistenza alla fiamma - Fire resistance  
 Certificato Classe 1 UNI 9175 CL. 1IM - EN 1021 - BS 5852  
 69% P.V.C. plastificato - 30% cotone - 1% poliuretano  
 (Martindale 50.000)



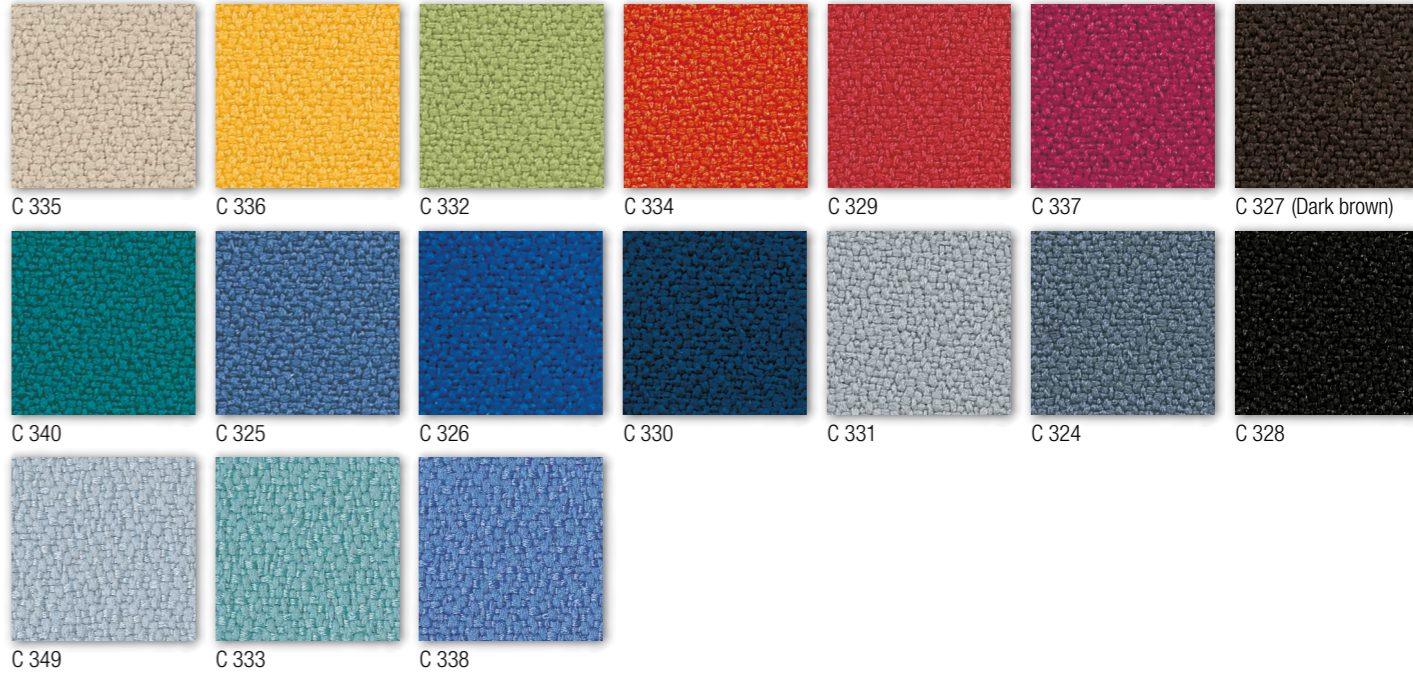
**C** Categoria Category  
 Material: 98% post consumer recycled polyester - 2% polyester  
 Flammability: EN 1021 1&2 - BS 5852 0&1 CA - TB 117-2013.  
 Will also pass other flammability standards.  
 Flame retardant performance is dependent upon the foam used.  
 Contain no Flame Retardant chemical.  
 Abrasion resistance: rubs - BS EN 14465 - BS EN ISO 12947-2 (Martindale 100.000)



**C** Categoria Category  
 Tessuto altamente ignifugo  
 Certificato Classe 1 Ministero dell'Interno  
 Fireproof fabric - Tissu non feu  
 Brandfester Bezug - Tela ignifuga  
 100% Poliestere Trevira CS  
 (Martindale 70.000)

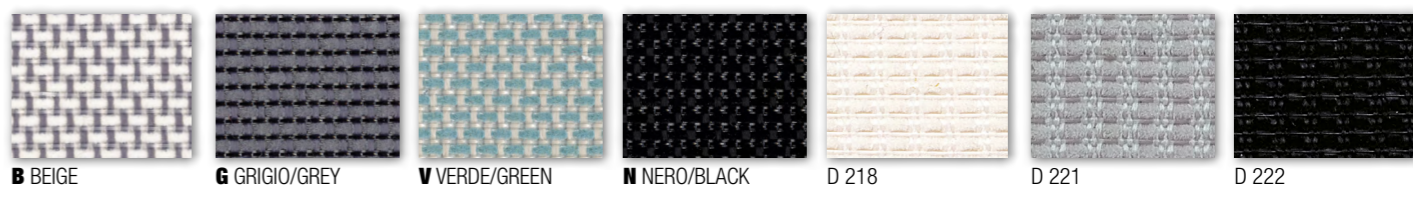


**C** Categoria Category  
 Tessuto altamente ignifugo  
 Certificato Classe 1 Ministero dell'Interno  
 Fireproof fabric - Tissu non feu  
 Brandfester Bezug - Tela ignifuga  
 100% Xtreme FR®  
 (Martindale 100.000)

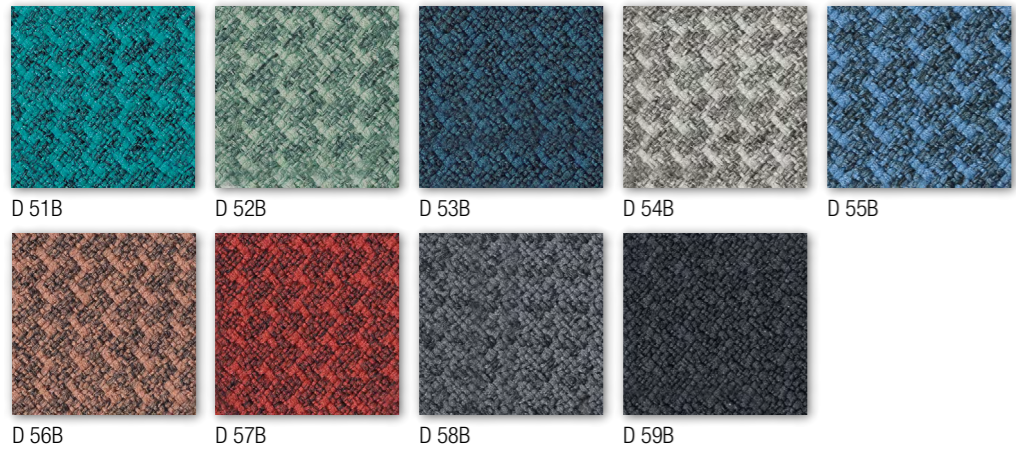


Solo per modello  
 Only for model  
**KEY LINE**  
 Rete-Mesh-Resille-Membran-Red  
 70% Polyester - 30% Polyamid  
 Flammability: EN 1021:2014 part 1  
 (cigarette test)  
 (Martindale 170.000)

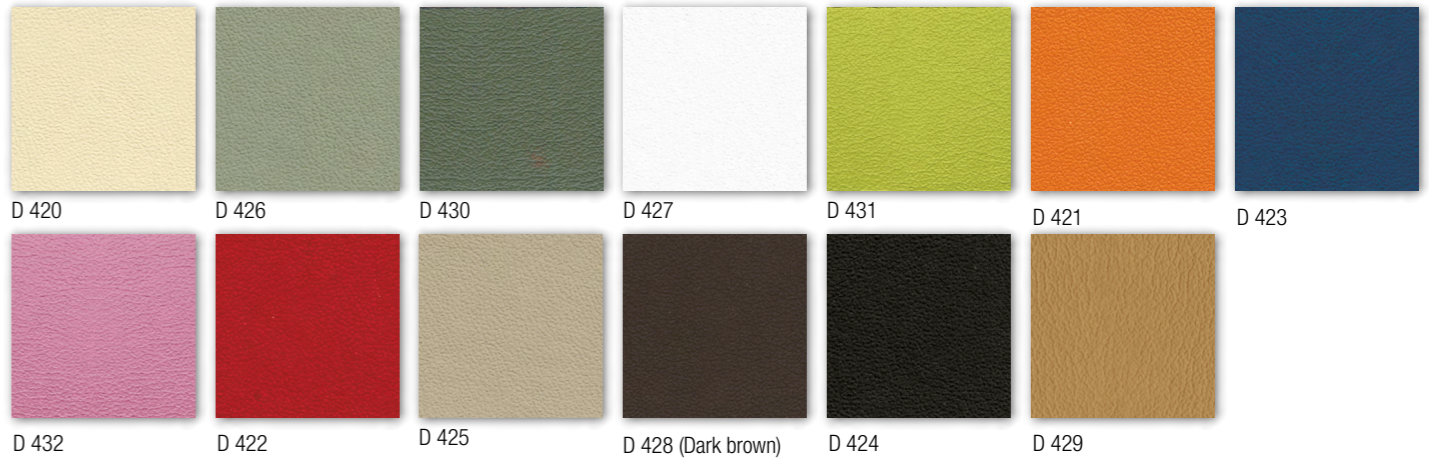
Solo per modello  
 Only for model  
**4902 SHRINX**  
**KROMA, KUPER, KONTAT KARMA, KORIUUM, KOSMO**  
 Rete - Mesh - Resille Membran - Red  
 64% PL - 36% PA  
 Martindale 100.000



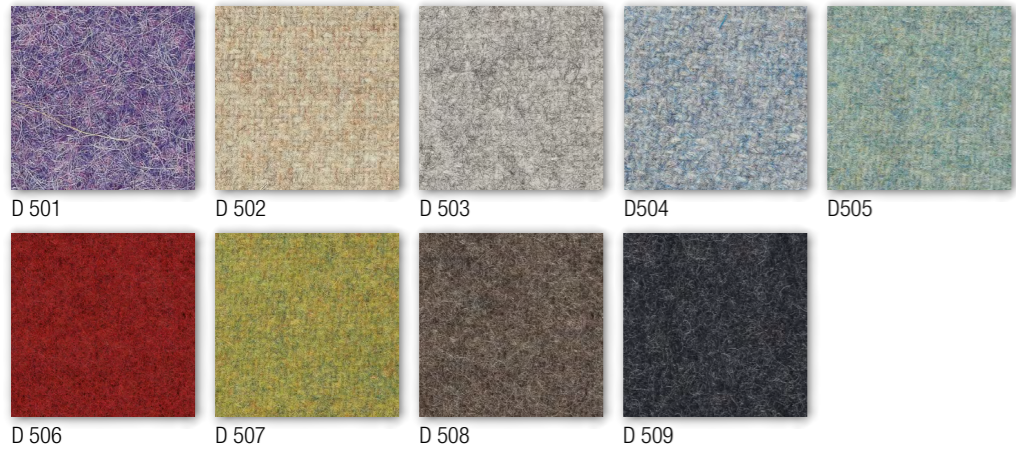
**D** Categoria Category  
 Post consumer recycled polyester 98% Polyester 2%  
 Flammability EN 1021 1&2  
 BS 5852 0&1 - CA TB 117-2013  
 (Martindale 100.000)



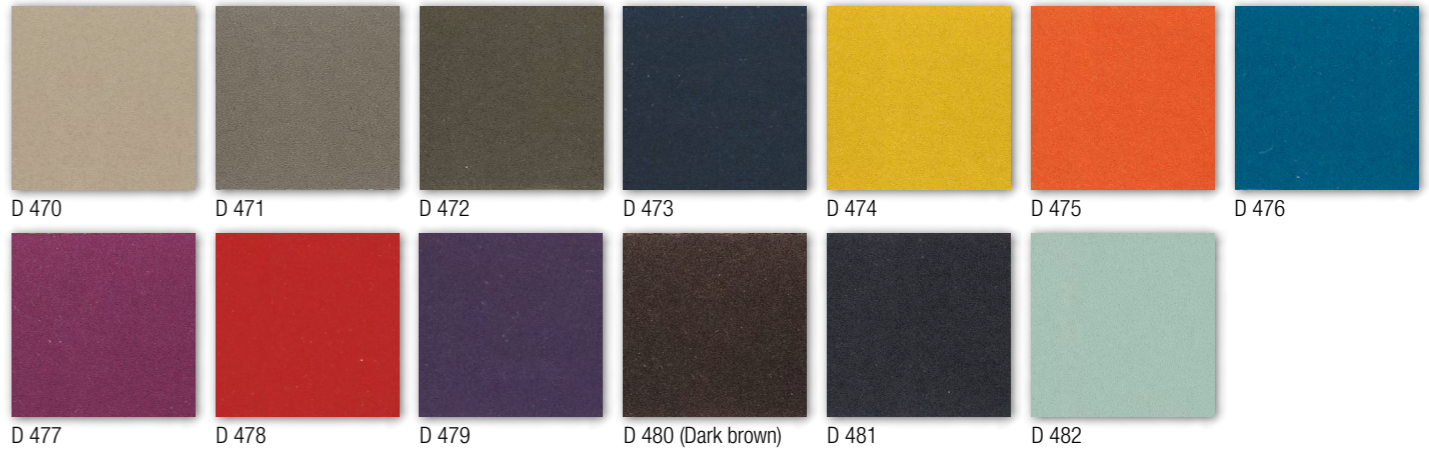
**D** Categoria Category  
 Trattamento antimicrobico - Antimicrobial treatment  
 Impermeabilità-Waterproof  
 Resistenza fiamma-Fire resistance  
 UNI 9175/87 CL.1IM - EN 1021 BS 5852  
 63% Poliuretano / Polyurethane - 29% Cotone - Cotton 8% PES  
 IMO A. 652  
 (Martindale 150.000)



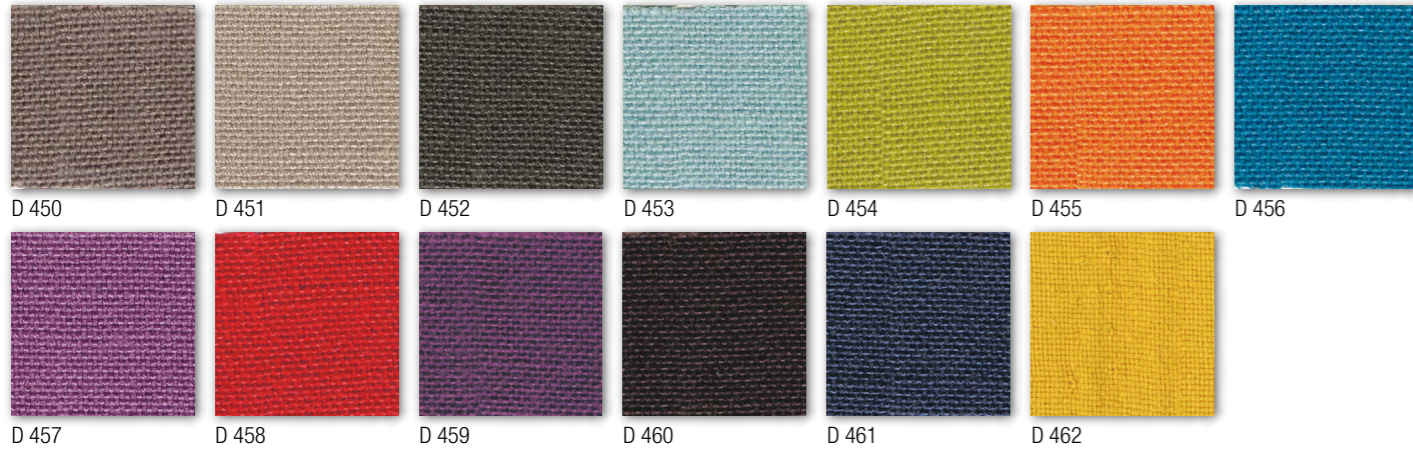
**D** Categoria Category  
 Resistenza alla fiamma - Fire resistance  
 Certificato Classe 1 IM EN 1021 Part. 1-2  
 75% Lana - 25% Poliammide / 75% Wool - 25% Polyamide  
 (Martindale 100.000)



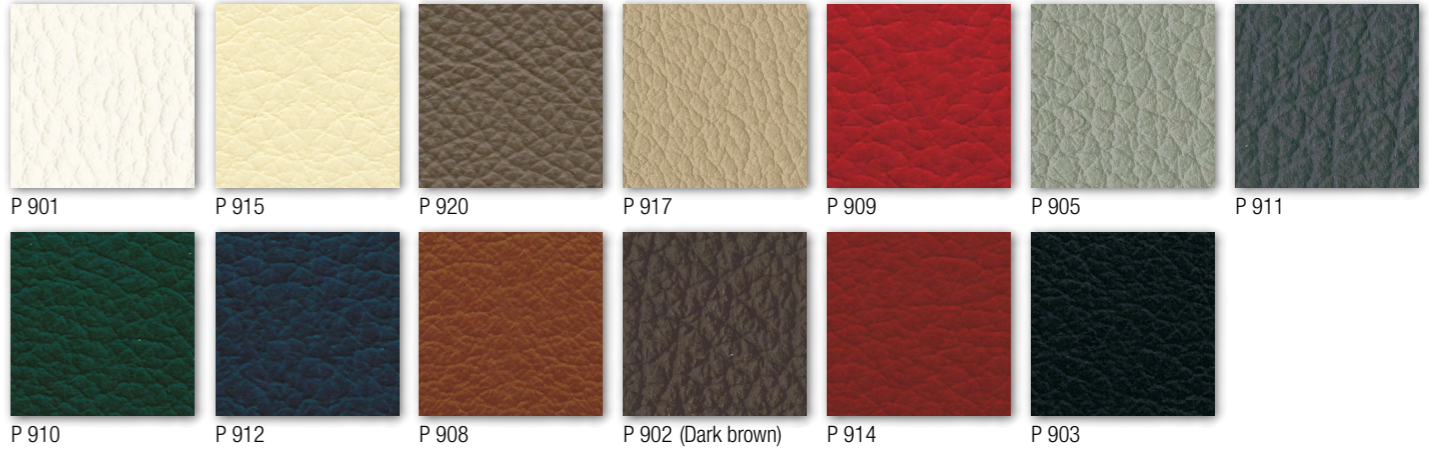
**D** Categoria Category  
 Trattamento antimicrobico - Antimicrobial treatment  
 Impermeabilità-Waterproof  
 Resistenza fiamma-Fire resistance  
 UNI 9175/87 CL.1IM - EN 1021 BS 5852  
 63% Poliuretano / Polyurethane - 29% Cotone - Cotton 8% PES  
 IMO A. 652  
 (Martindale 150.000)



**D** Categoria Category  
 Resistenza alla fiamma - Fire resistance  
 UNI 9177 CL. 1 - UNI 9175 CL. 1IM - EN 1021-2  
 100% PES  
 (Martindale 60.000)



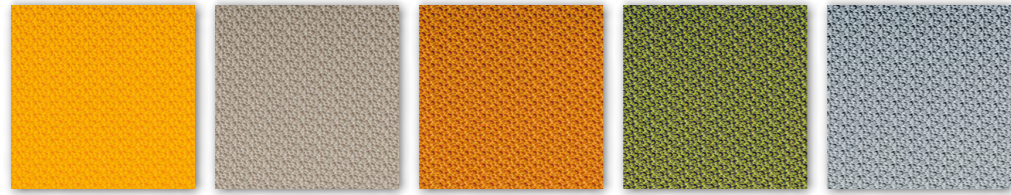
**P** Categoria Category  
 Vera pelle - Genuine leather  
 Cuir - Leder - Piel auténtica  
 A richiesta disponibili altri colori.  
 By request any other colours available.



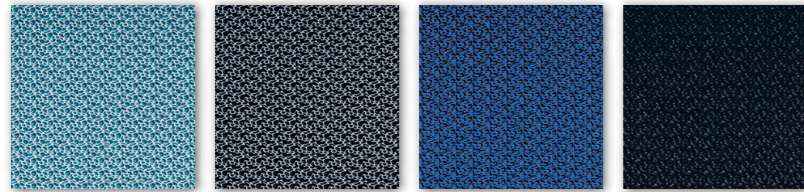
# D

## Categoria Category

Tessuto ignifugo - Fireproof fabric - Tissu non feu - Brandfester Bezug - Tela ignifuga  
Classe 1M - DIN 4102 B2 - NF P 92-503/M2  
100% Vinyl-compound - 100% Polyester Ultra Hi-Loft™ Backing  
PERMABLOK® - Waterproof  
(Martindale > 100.000)



D 801 D 802 D 803 D 804 D 805

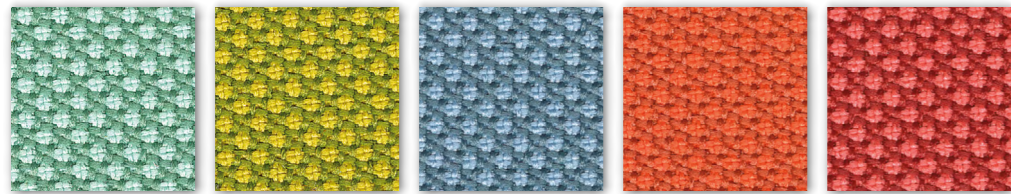


D 806 D 807 D 808 D 809

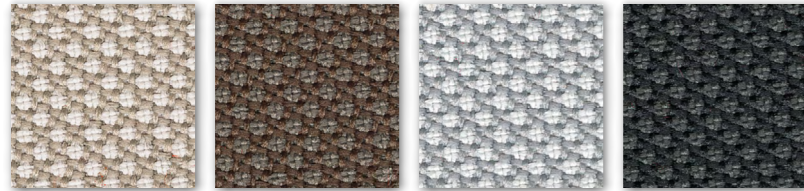
# D

## Categoria Category

Material: 100% post consumer recycled poliester  
Flammability: EN 1021 1&2 - BS 5852 0&1 Classe 1 - CA TB 117-2013.  
Will also pass other flammability standards.  
Flame retardant performance is dependent upon the foam used.  
Abrasion resistance: rubs - EN ISO 12947-2 (Martindale 100.000)



D 40R D 41R D 42R D 43R D 44R



D 45R D 46R D 47R D 48R

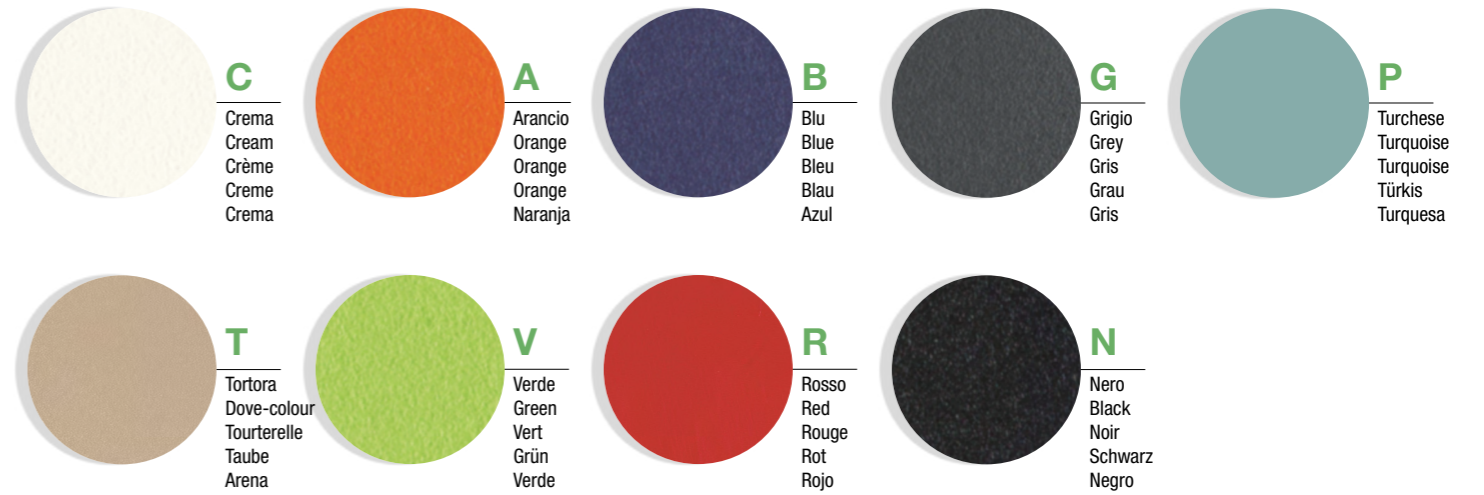
# KLIA

COLORI POLIPROPILENE RINFORZATO FIBRA VETRO  
FIBERGLASS-REINFORCED POLYPROPYLENE COLORS



# KICCA KALEA

COLORI POLIPROPILENE  
POLYPROPYLENE COLOURS



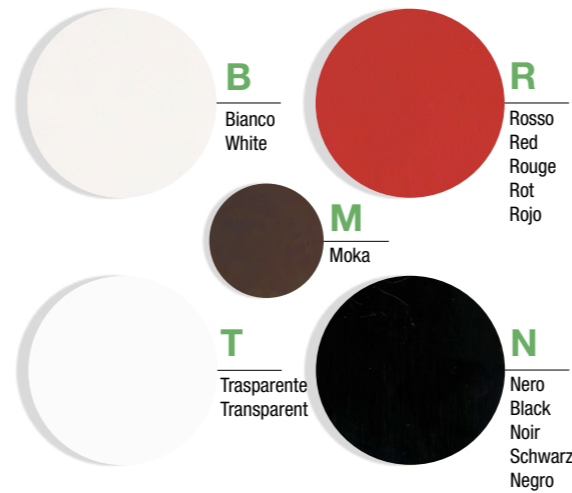
# KICCA ONE

COLORI POLIPROPILENE RINFORZATO FIBRA VETRO  
FIBERGLASS-REINFORCED POLYPROPYLENE COLORS



# KRIZIA

COLORI POLIPROPILENE  
POLYPROPYLENE COLOURS



# KENSHO KAPİO

COLORI PIANI-BASI  
TOPS-BASES COLOURS

