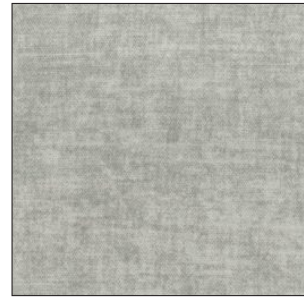
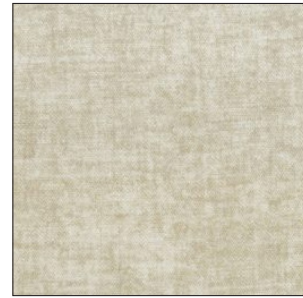


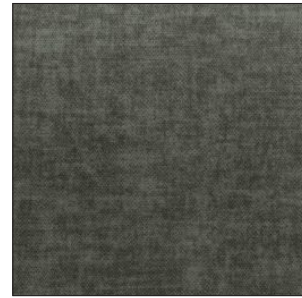
Velvy category 2 - Fabric



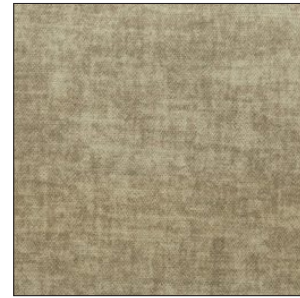
260



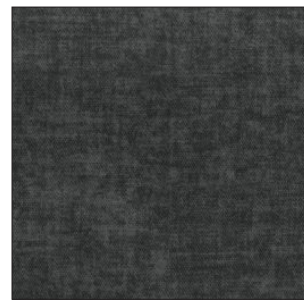
261



262



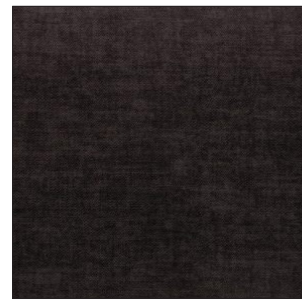
263



264



265



266



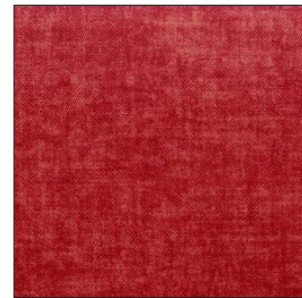
267



268



269



270



271



272



273



274



275

Velvy category 2 - Fabric

	Unità di misura/ Measurement Unit	Risultati/Results	Test
Altezza / Width	cm	140 cm	
Composizione / Composition	%	100% pl	
Peso / Weight	gr/mtl	560	
Martindale / Abrasion Resistance	cicli / cycles	>70.000	ISO 12947-2 2016
Pilling		4 - 5	ISO 12945-1 2000
Resistenza della cucitura / Seam Strength	N	Ordito / Warp : 304 N	ISO 13935-2 2014
		Trama / Weft : 609 N	
Resistenza allo slittamento della cucitura / Seam Slippage	mm	Ordito / Warp : 2,0 mm	ISO 13936-2 2004
		Trama / Weft : 2,0 mm	
Solidità del colore alla luce / Colour Fastness to light	scala / range 1:8	4	ISO 105-B02 2014
Solidità del colore al lavaggio a secco / Colour Fastness to dry cleaning		4 - 5	ISO 105-D01 2010
Solidità del colore allo sfregamento / Colour Fastness to rubbing		Secco / Dry: 4 - 5	ISO 105-X12 2016
		Umido / Wet: 4 - 5	

Manutenzione / Cleaning Instructions



Temperatura massima 30° C / Maximum 30° C



Candeggio non ammesso / Do not bleach



Temperatura massima 110° / Iron at low temperature



Non asciugare in asciugatrice / Do not tumble dry



Non asciugare al sole / Do not dry in the sun

Non strizzare / Do not wring out or twist



Lavare a secco / Professional dry-cleaning

Caratteristiche / Features

Antimacchia / Antistain

Idrorepellente / Water repellent

Trattamento Macchie / Stain Treatment

Penna : smacchiabile con acqua, in caso di macchie ostinate intervenire con acqua e sapone neutro.

Pen: stain removal with water. To use water and neutral soap to remove stubborn stain.

Birra - Caffè - Cioccolato - Latte - Pomodoro - Succo :

Smacchiabile con acqua, in caso di macchie ostinate intervenire con acqua e sapone neutro.

Beer - Coffee - Chocolate - Milk - Tomato - Juice :

Stain removal with water. To use water and neutral soap to remove stubborn stain.

Nessuna garanzia per danni causati da interventi non corretti, detergenti non adatti o uso improprio.
No warranty will be assumed for damage caused by incorrect care, unsuitable cleaners or improper use.

I COLORI SONO PURAMENTE INDICATIVI - COLORS ARE PURELY INDICATIVE -
LES COULEURS SONT PUREMENT INDICATIVES - DIE FARBABBILDUNGEN DER MATERIALIEN SIND REIN INDIKATIV