

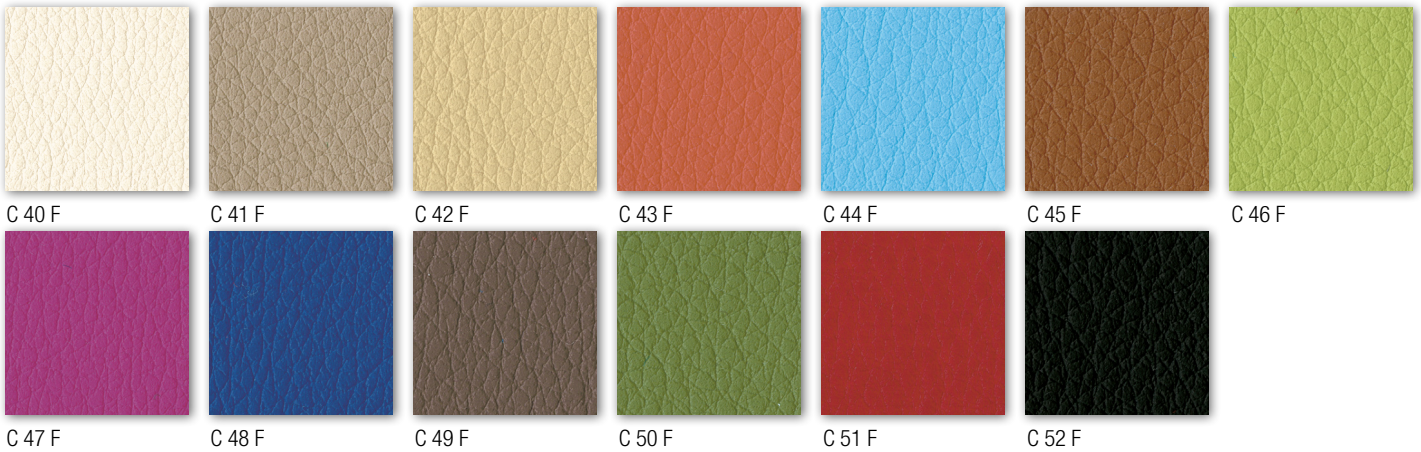
Cat. A
 ECOPELLE
 ECOLEATHER

Resistenza alla fiamma - Fire resistance
 Certificato Classe 1 UNI 9175 CL. 1 IM
 87,5% P.V.C. plastificato - 12,5% cotone
 (Martindale 100.000)



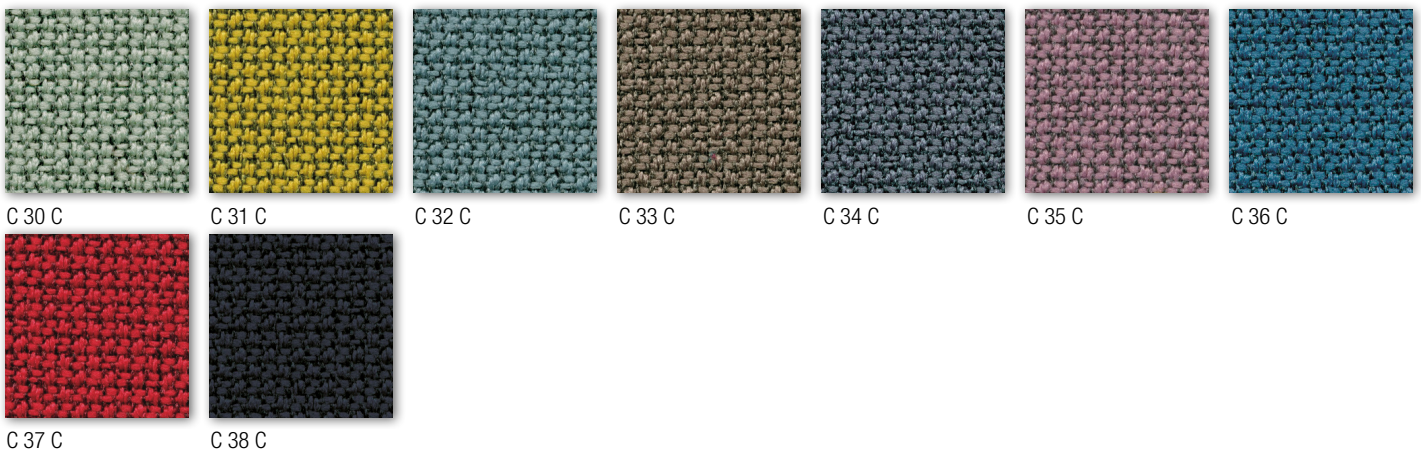
Cat. C
 ECOPELLE
 ECOLEATHER

SKILL/SECRET
 Resistenza alla fiamma - Fire resistance
 Certificato Classe 1 UNI 9175 CL. 1IM - EN 1021 - BS 5852
 69% P.V.C. plastificato - 30% cotone - 1% poliuretano
 (Martindale 50.000)



Cat. C
 TESSUTO
 FABRIC

Material: 98% post consumer recycled polyester - 2% polyester
 Flammability: EN 1021 1&2 - BS 5852 0&1 CA - TB 117-2013.
 Will also pass other flammability standards.
 Flame retardant performance is dependent upon the foam used.
 Contain no Flame Retardant chemical.
 Abrasion resistance: rubs - BS EN 14465 - BS EN ISO 12947-2 (Martindale 100.000)



Cat. C
TESSUTO
FABRIC

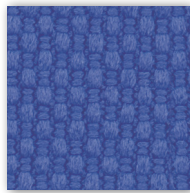
Tessuto altamente ignifugo
Certificato Classe 1 Ministero dell'Interno
Fireproof fabric - Tissu non feu
Brandfester Bezug - Tela ignifuga
100% Poliestere Trevira CS
(Martindale 70.000)



C 381



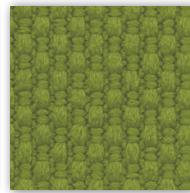
C 38 T



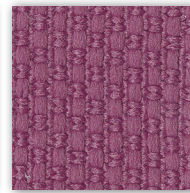
C 383



C 380



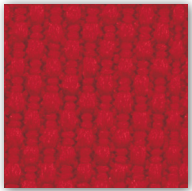
C 385



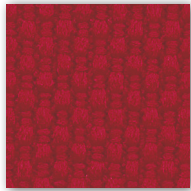
C 38 L



C 38 H



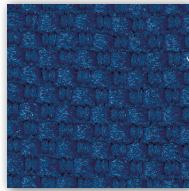
C 382



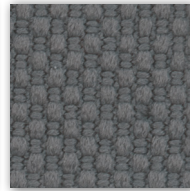
C 386



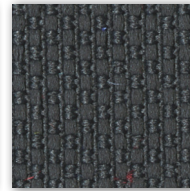
C 387



C-38



C 384



C 38 A



C 388



C 38 G



C 38 M



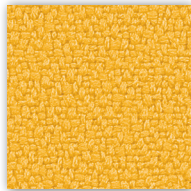
C 38 P

Cat. C
TESSUTO
FABRIC

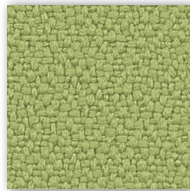
Tessuto altamente ignifugo
Certificato Classe 1 Ministero dell'Interno
Fireproof fabric - Tissu non feu
Brandfester Bezug - Tela ignifuga
100% Xtreme FR®
(Martindale 100.000)



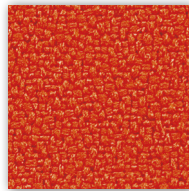
C 335



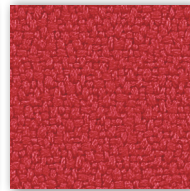
C 336



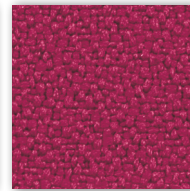
C 332



C 334



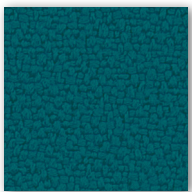
C 329



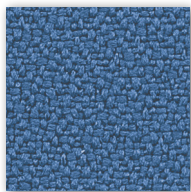
C 337



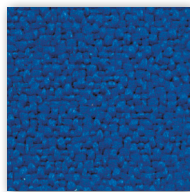
C 327 (Dark brown)



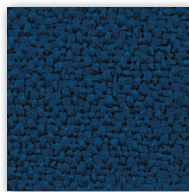
C 340



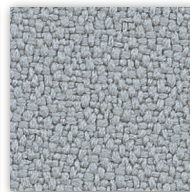
C 325



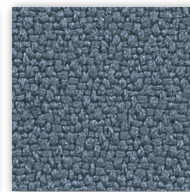
C 326



C 330



C 331



C 324



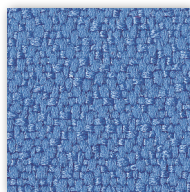
C 328



C 349



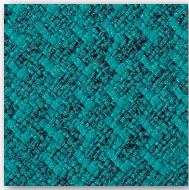
C 333



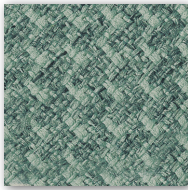
C 338

Cat. D
TESSUTO
FABRIC

Post consumer recycled polyester
98% Polyester 2%
Flammability EN 1021 1&2
BS 5852 O&1 - CA TB 117-2013
(Martindale 100.000)



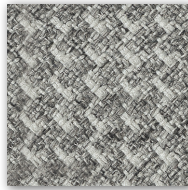
D 51B



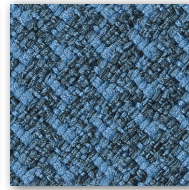
D 52B



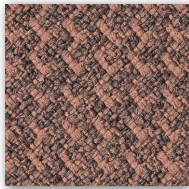
D 53B



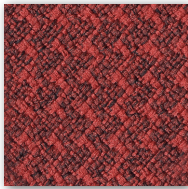
D 54B



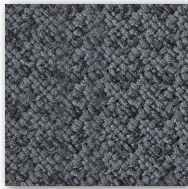
D 55B



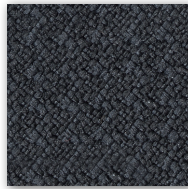
D 56B



D 57B



D 58B



D 59B

Cat. D
TESSUTO
FABRIC

Resistenza alla fiamma - Fire resistance
Certificato Classe 1 IM EN 1021 Part. 1-2
75% Lana - 25% Poliammide / 75% Wool - 25% Polyammide
(Martindale 100.000)



D 501



D 502



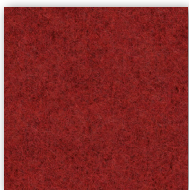
D 503



D 504



D 505



D 506



D 507



D 508



D 509

Cat. D
TESSUTO
FABRIC

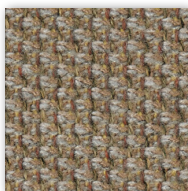
100% post-consumer recycled polyester
Abrasion: rubs (EN ISO 12947-2) Martindale 120.000
Flammability: BS EN 1021 1&2 Cigarette and Match
CA TB 117-2013



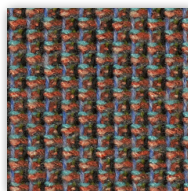
D 40Y



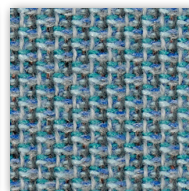
D 41Y



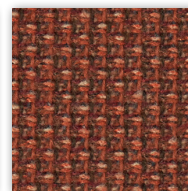
D 42Y



D 43Y



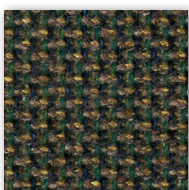
D 44Y



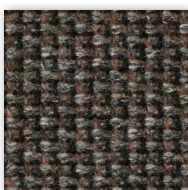
D 45Y



D 46Y



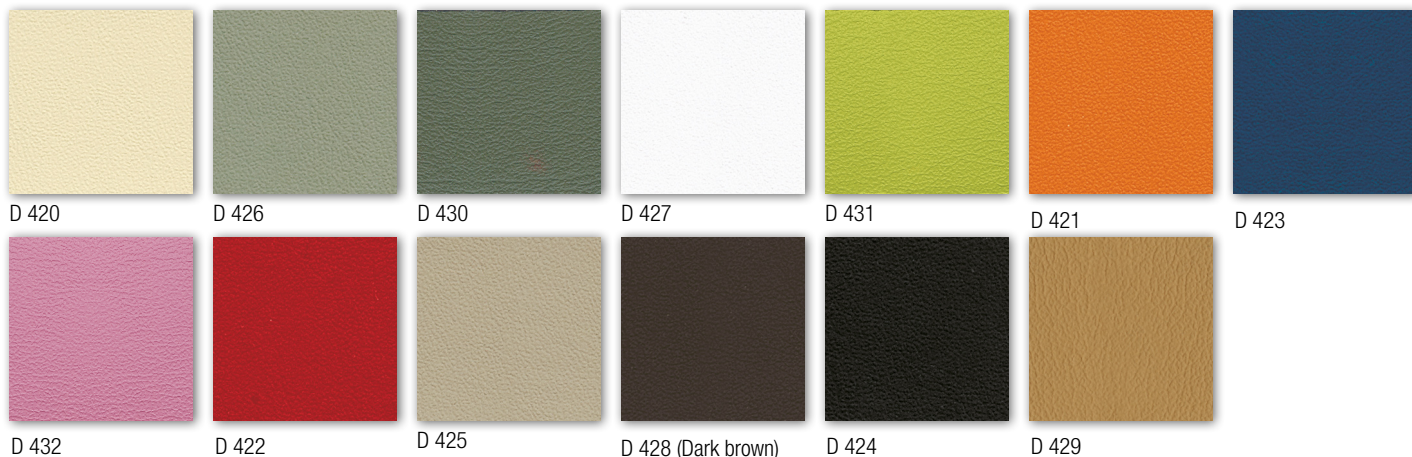
D 47Y



D 48Y

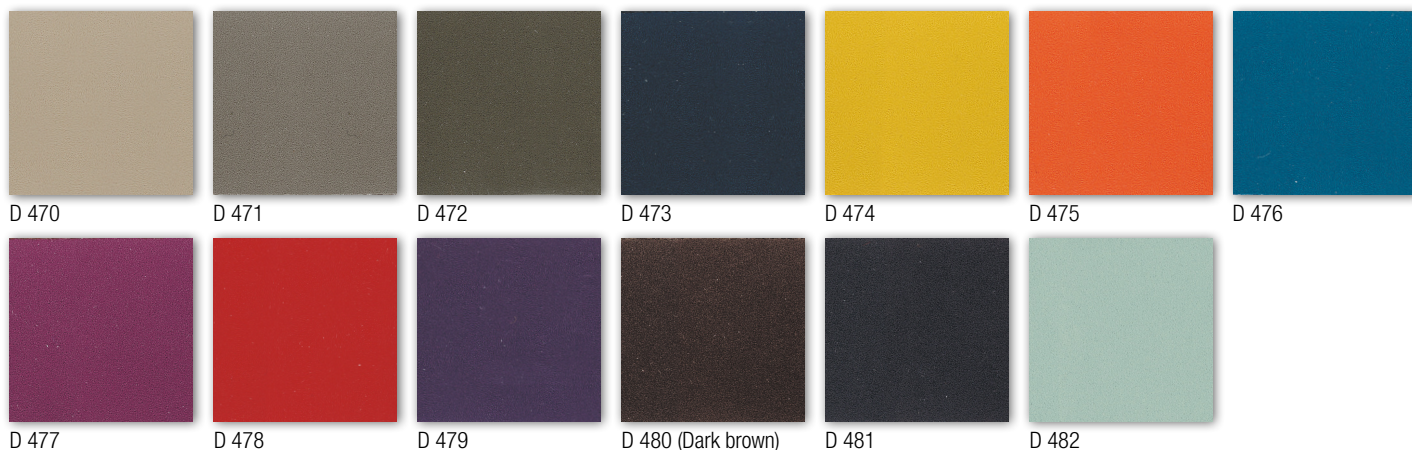
Cat. D
ECOPELLE
ECOLEATHER

Trattamento antimicrobico - Antimicrobial treatment
 Impermeabilità-Waterproof
 Resistenza fiamma-Fire resistance
 UNI 9175/87 CL.1IM - EN 1021 BS 5852
 63% Poliuretano / Polyurethane - 29% Cotone - Cotton 8% PES
 IMO A. 652
 (Martindale 150.000)



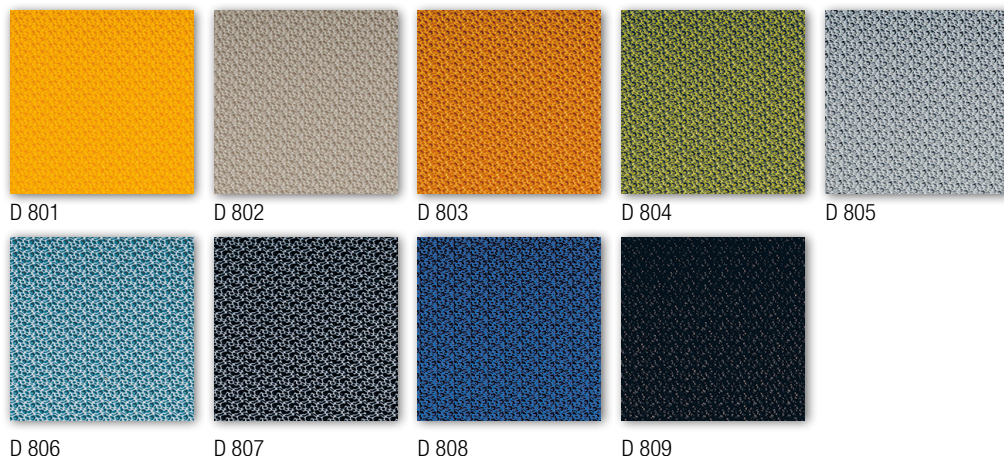
Cat. D
ECOPELLE
ECOLEATHER

Trattamento antimicrobico - Antimicrobial treatment
 Impermeabilità-Waterproof
 Resistenza fiamma-Fire resistance
 UNI 9175/87 CL.1IM - EN 1021 BS 5852
 63% Poliuretano / Polyurethane - 29% Cotone - Cotton 8% PES
 IMO A. 652
 (Martindale 150.000)



Cat. D
TESS. TECNICO
TECHNICAL FABRIC

Tessuto ignifugo - Fireproof fabric - Tissu non feu - Brandfester Bezug - Tela ignifuga
 Classe 1IM - DIN 4102 B2 - NF P 92-503/M2
 100% Vinyl-compound - 100% Polyester Ultra Hi-Loft™ Backing
 PERMABLOK® - Waterproof
 (Martindale > 100.000)

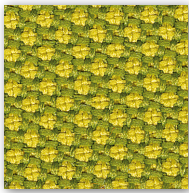


Cat. D
TESSUTO
FABRIC

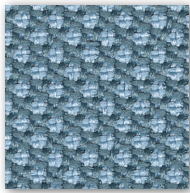
Material: 100% post consumer recycled poliester
Flammability: EN 1021 1&2 - BS 5852 0&1 Classe 1 - CA TB 117-2013.
Will also pass other flammability standards.
Flame retardant performance is dependent upon the foam used.
Abrasion resistance: rubs - EN ISO 12947-2 (Martindale 100.000)



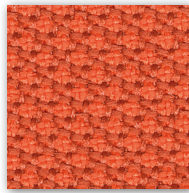
D 40R



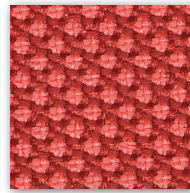
D 41R



D 42R



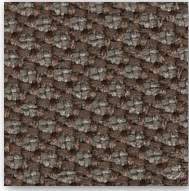
D 43R



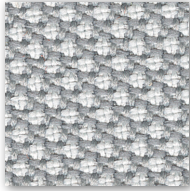
D 44R



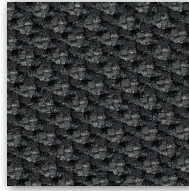
D 45R



D 46R



D 47R



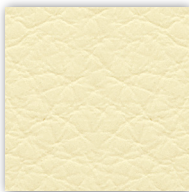
D 48R

Cat. P
VERA PELLE
GENUINE LEATHER

Vera pelle - Genuine leather
Cuir - Leder - Piel auténtica
A richiesta disponibili altri colori.
By request any other colours available.



P 901



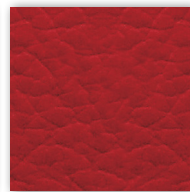
P 915



P 920



P 917



P 909



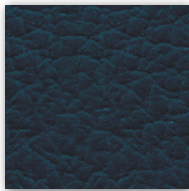
P 905



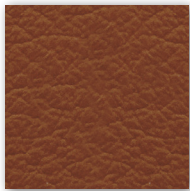
P 911



P 910



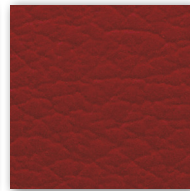
P 912



P 908



P 902 (Dark brown)



P 914



P 903

ECOPELLE
ECOLEATHER

Solo per schienale trapuntato modello
Only for quilted back model

KLINT

SKILL/SECRET
Resistenza alla fiamma - Fire resistance
Certificato Classe 1 UNI 9175 CL. 1IM - EN 1021 - BS 5852
69% P.V.C. plastificato - 30% cotone - 1% poliuretano
(Martindale 50.000)



40T



41T



49T



52T

Solo per modello
Only for model
KEY LINE

Rete-Mesh-Resille-Membran-Red
70% Polyester - 30% Polyamid
Flammability: EN 1021:2014 part 1
(cigarette test)
(Martindale 170.000)

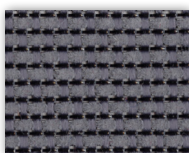
**4902
SHRINX**

Solo per modello
Only for model
**KUPER, KARMA,
KORIUM, KOSMO**

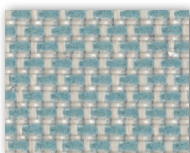
Rete - Mesh - Resille
Membran - Red
64% PL - 36% PA
Martindale 100,000



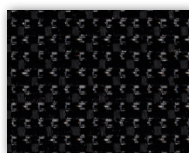
B BEIGE



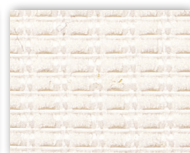
G GRIGIO/GREY



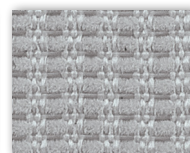
V VERDE/GREEN



N NERO/BLACK



D 218



D 221



D 222